

Croft Road, Eaglescliffe



Asking Price £145,000

IH INGLEBY HOMES





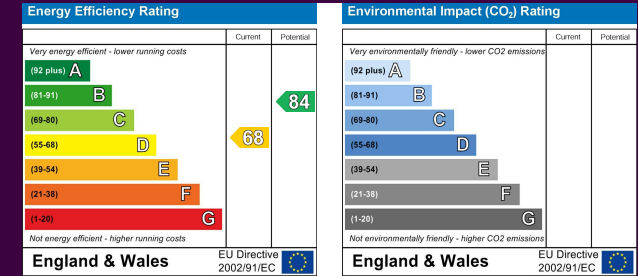
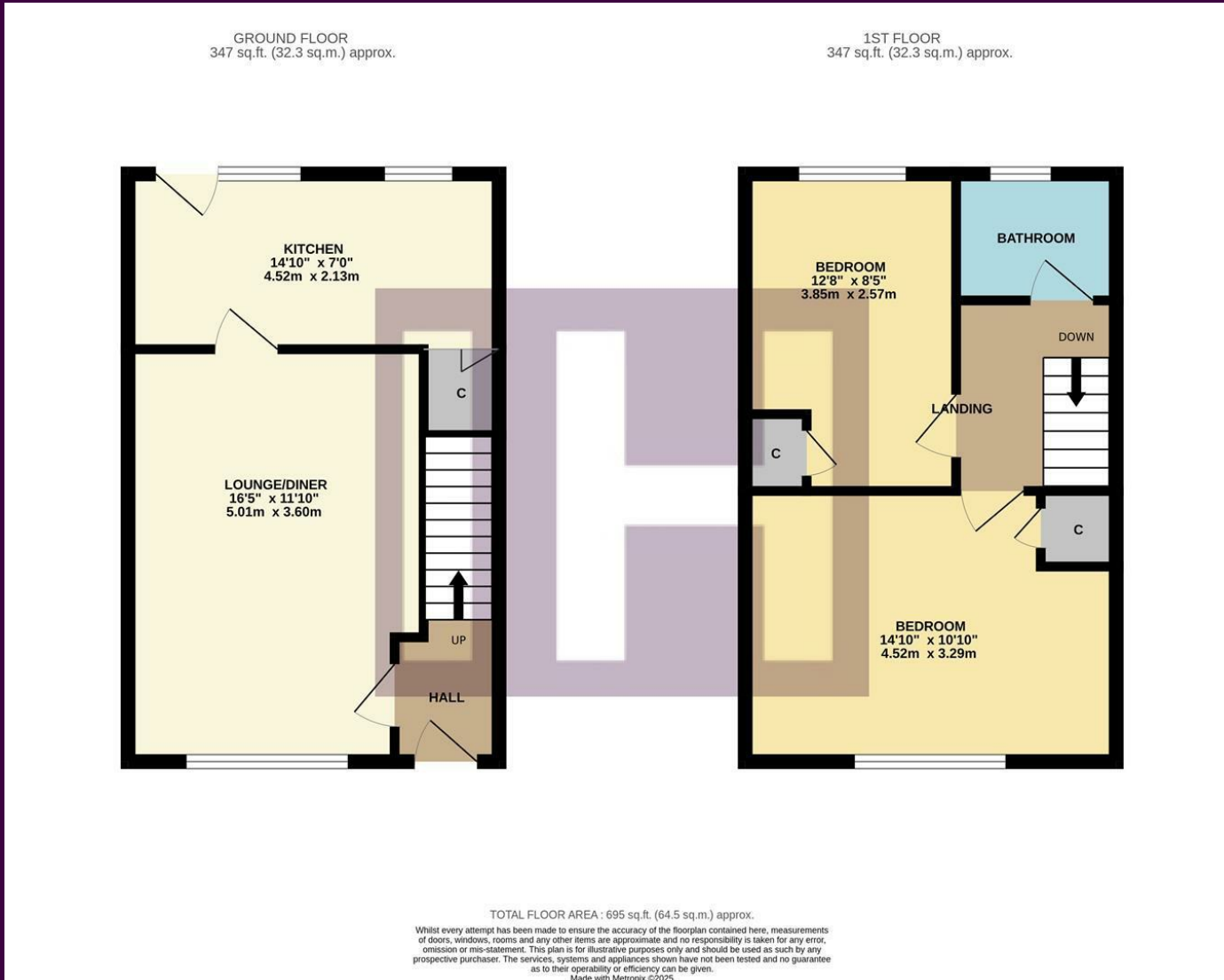
Situated within this popular spot, just a walk away from Yarm High Street and all of its fabulous facilities, this attractive two-double bedroomed property certainly merits early inspection.

Competitively priced under a Taylor Wimpey Part Exchange scheme, and available with no forward chain - this could prove to be an ideal first purchase, or buy to let.

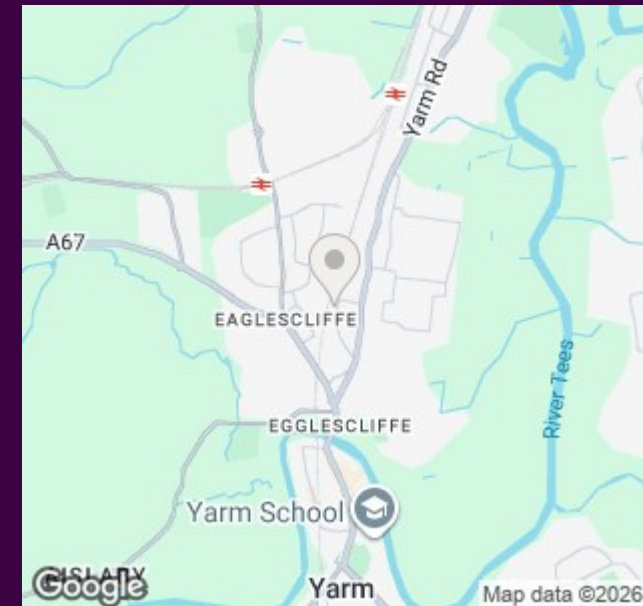
Benefitting from UPVC double glazing and warmed with combi-boiler gas central heating, the accommodation briefly comprises an entrance hall, generous open-plan lounge/diner, and rear modern kitchen to the ground floor. The first floor brings two generous double bedrooms, with other similar examples being seen to split the larger front bedroom, providing a third. Separate modern family bathroom.



The Layout



The Location



Council Tax Band:

A

Tenure:

Freehold



- Marketed on behalf of Taylor Wimpey under their part exchange scheme
- Attractive, two-double bedroom property
- Close proximity to Yarm High Street
- Generous rear garden, enclosed front garden
- Ideal first purchase or buy to let
- No forward chain
- Call Ingleby Homes on 01642 671025 to arrange your viewing